



Survival prediction in mesothelioma using a scalable Lasso regression model: instructions for use and initial performance using clinical predictors

Andrew C Kidd,¹ Michael McGettrick,¹ Selina Tsim,¹ Daniel L Halligan,² Max Bylesjo,² Kevin G Blyth^{1,3}

To cite: Kidd AC, McGettrick M, Tsim S, *et al*. Survival prediction in mesothelioma using a scalable Lasso regression model: instructions for use and initial performance using clinical predictors. *BMJ Open Res* 2018;**5**:e000240. doi:10.1136/bmjresp-2017-000240

► Additional material is published online only. To view please visit the journal online (<http://dx.doi.org/10.1136/bmjresp-2017-000240>).

Received 16 August 2017
Revised 28 November 2017
Accepted 8 December 2017



¹Pleural Disease Unit, Queen Elizabeth University Hospital, Glasgow, UK

²Fios Genomics, Edinburgh, UK

³Institute of Infection, Immunity and Inflammation, University of Glasgow, Glasgow, UK

Correspondence to

Dr Kevin G Blyth;
kevin.blyth@glasgow.ac.uk

ABSTRACT

Introduction Accurate prognostication is difficult in malignant pleural mesothelioma (MPM). We developed a set of robust computational models to quantify the prognostic value of routinely available clinical data, which form the basis of published MPM prognostic models. **Methods** Data regarding 269 patients with MPM were allocated to balanced training (n=169) and validation sets (n=100). Prognostic signatures (minimal length best performing multivariate trained models) were generated by least absolute shrinkage and selection operator regression for overall survival (OS), OS <6 months and OS <12 months. OS prediction was quantified using Somers D_{xy} statistic, which varies from 0 to 1, with increasing concordance between observed and predicted outcomes. 6-month survival and 12-month survival were described by area under the curve (AUC) scores.

Results Median OS was 270 (IQR 140–450) days. The primary OS model assigned high weights to four predictors: age, performance status, white cell count and serum albumin, and after cross-validation performed significantly better than would be expected by chance (mean D_{xy} 0.332 (\pm 0.019)). However, validation set D_{xy} was only 0.221 (0.0935–0.346), equating to a 22% improvement in survival prediction than would be expected by chance. The 6-month and 12-month OS signatures included the same four predictors, in addition to epithelioid histology plus platelets and epithelioid histology plus C-reactive protein (mean AUC 0.758 (\pm 0.022) and 0.737 (\pm 0.012), respectively). The <6-month OS model demonstrated 74% sensitivity and 68% specificity. The <12-month OS model demonstrated 63% sensitivity and 79% specificity. Model content and performance were generally comparable with previous studies.

Conclusions The prognostic value of the basic clinical information contained in these, and previously published models, is fundamentally of limited value in accurately predicting MPM prognosis. The methods described are suitable for expansion using emerging predictors, including tumour genomics and volumetric staging.

INTRODUCTION

Malignant pleural mesothelioma (MPM) is an aggressive tumour of mesothelial cells associated with prior asbestos exposure. With the increased use of combination

Key messages

- Current mesothelioma survival models rely on basic clinical data and cannot be up-scaled to accommodate emerging predictors, including genomics and volumetric staging.
- We describe methods for creation of a scalable computational survival model using Lasso regression and report initial performance using clinical data.
- The prognostic value of the basic clinical predictors in these models is limited; the methods described are suitable for upscaling using emerging predictors.

chemotherapy^{1 2} and a diverse range of clinical trials, accurate prognostication is an important issue for patients with MPM, clinicians and researchers. However, MPM is an exceptionally heterogeneous disease and accurate survival prediction is hampered by a limited staging system,³ a difficult to image primary tumour^{4 5} and diverse biology.⁶

Several previous survival prediction models based on routinely available clinical information have been reported, including the Cancer and Leukaemia Group B (CALGB) score,⁷ the European Organization for Research and Treatment of Cancer (EORTC) score⁸ and the Brims Decision Tree Model.⁹ However, the extent to which these basic data, with limited reference to tumour biology and no reference to disease extent, precisely predict observed survival has not been well described. Previous validation studies have generally tested the ability of each model to correctly allocate new patients to previously defined mortality risk groups, rather than testing whether the correct survival time is precisely determined. This translates into cautious use by clinicians who intuitively sense that existing models do not adequately describe survival outcomes in

at least some of their patients. Moreover, the methods used in previous studies cannot be easily upscaled to incorporate the vast array of evolving candidate predictors on the horizon, particularly genomic data.

Our goal is to define in future studies an accurate and precise survival prediction tool that accounts for all relevant biological factors in MPM, including genomics. In this preliminary analysis, we have developed and tested a set of new computational models based on routinely available clinical data using a method that can be upscaled to accommodate future predictors. The least absolute shrinkage and selection operator (Lasso) regression method is recommended by the authors of the Transparent Reporting of a multivariable prediction model for Individual Prognosis or Diagnosis (TRIPOD) statement for this purpose,¹⁰ but has not been used before in MPM. Since the outputs of Lasso regression include performance metrics, the main purpose of this study was to quantify the prognostic value of routinely available clinical data as a starting point for future studies.

METHODS

Data collection

Baseline clinical information was collected regarding 269 patients diagnosed with MPM in the West of Scotland Cancer Network between January 2008 and April 2014. 280 patients were initially identified in the Queen Elizabeth University Hospital (Glasgow, UK) Pathology Department with an archived diagnosis of MPM. Eleven of the 280 patients were subsequently excluded either due to incomplete or unavailable data (n=3) or a contrary diagnosis on review of the case records (peritoneal mesothelioma (n=6), lung adenocarcinoma (n=2)). The study database was populated retrospectively using electronic case notes and the prospectively collected records of the West of Scotland Mesothelioma Multidisciplinary Team (MDT) meeting. This forum reviewed all cases diagnosed after June 2012. The data held by the MDT (including demographics, histology, performance status (PS)) were supplemented by additional variables retrieved from electronic records, including baseline (pre-biopsy/pleurodesis) inflammatory indices and other blood results, symptoms, treatment(s) received and survival data. Data regarding PS were inconsistently recorded. Therefore, the best estimate of PS was recorded where possible (based on a hierarchy of: documented at MDT, documented in baseline clinical letter, inferred from functional description in clinical letter).

Definition of predictor and outcome variables

Data regarding 20 potential predictor variables were collected (see [table 1](#)) in addition to the outcome variable overall survival (OS), in days, from the date of diagnosis and censoring information. Predictor variables included baseline demographics, histological subtype, PS, deprivation (quantified by the Scottish Index of Multiple Deprivation 2012),¹¹ comorbidity (quantified by the Charlson

Comorbidity Index)¹² and a range of inflammatory markers, some of which have previously shown some prognostic value in cancer (eg, neutrophil-to-lymphocyte ratio (NLR),¹³ platelet-to-lymphocyte ratio (PLR) and the modified Glasgow Prognostic Score (mGPS)).¹⁴ Aspirin use was also recorded given its previous efficacy in other inflammatory-linked cancers, including colon cancer¹⁵ and the potentially important pathogenic role of one of its intracellular targets, high mobility group box protein-1 (HMGB1), in MPM.¹⁶ EORTC score was computed for all patients.⁸ This was accounted for when balancing the training and validation sets but was not included in any subsequent survival models.

Data processing

Processing of outcome variables was performed to facilitate the use of Cox proportional hazards models, including imputation of missing values as applicable. The 269 patients were subsequently divided into balanced training (n=169) and validation sets (n=100) for assessment of model performance. The processing and balancing steps are covered in more detail in the online supplementary appendix.

Signature generation and validation overview

Signatures (minimal length best performing multivariate trained models) were generated for three survival variables of interest: OS, OS <6 months and OS <12 months. Each signature was generated using the training set only. Feature selection was performed using Lasso regression, implemented in the 'glmnet' package for R.^{17 18} In each case, the shrinkage parameter of the model was adjusted such that the number of features being used (the signature length) was reduced from 20 to 1. The performance of models based on different signal lengths was assessed using fivefold cross-validation and a statistic appropriate to that model. The best model was selected by balancing maximum model performance against minimum number of features. The generated models based on the training set were validated using the reserved validation set.

Signature generation details

Measurement of model performance

To measure the performance of predictions relative to known values within cross-validation for OS, a censoring-adjusted C-statistic was used.¹⁹ For ease of interpretation this was transformed as Somers' $D_{xy}=2.C-1$. If the model provides predictions that, on average, have the same concordance with the observed values as expected by chance, then $D_{xy}=0$. However, if they are on average more concordant, then $D_{xy}>0$, tending to $D_{xy}=1$ when there is perfect concordance with the real observations. Performance of the binary outcome models (OS <6 months and OS <12 months) was quantified using the area under the curve (AUC) score, which is numerically equivalent to the C-statistic. AUC/C-statistics ≤ 0.5 are

Table 1 Clinical characteristics and survival outcomes in 269 patients with malignant pleural mesothelioma, split into training (n=169) and validation (n=100) sets

Characteristic	Training set n (%)	Missing n (%)	Validation set n (%)	Missing n (%)	P value
Age	73 (67–79)	0 (0)	72 (67–80)	0 (0)	0.877
Gender					
Male	136 (80.5)		81 (81)		1.000
Not recorded	0 (0)		0 (0)		
SIMD decile	3.0 (1.0–8.0)	17 (10)	3.0 (1.0–8.0)	15 (15)	0.956
Histological subtype					
Epithelioid	108 (63.9)	–	68 (68)	–	0.895
Biphasic	12 (7.1)	–	8 (8)	–	
Sarcomatoid	33 (19.5)	–	18 (18)	–	
Not recorded	16 (9.5)	–	6 (6)	–	
Performance status	1.0 (0.0–2.0)	49 (29)	1.0 (1.0–2.0)	27 (27)	0.831
EPS	1.7 (1.1–2.3)	53 (31)	1.7 (1.7–2.3)	27 (27)	0.947
CCI score	2.0 (2.0–3.0)	0 (0)	2.0 (2.0–3.0)	0 (0)	0.730
mGPS	1.0 (1.0–2.0)	32 (19)	1.0 (1.0–2.0)	17 (17)	0.990
Symptoms					
Weight loss	2 (1.2)	–	1 (1)	–	1.000
SOB	81 (47.9)	–	42 (42)	–	
Cough	1 (0.6)	–	0 (0)	–	
Chest pain	22 (13)	–	14 (14)	–	
Abdominal swelling	3 (1.8)	–	1 (1)	–	
SOB and chest pain	16 (9.5)	–	11 (11)	–	
Not recorded	44 (26)		31 (31)		
Fluid LDH	400 (240–680)	62 (37)	470 (260–890)	38 (38)	0.441
Serum LDH	190 (160–220)	127 (75)	190 (160–240)	73 (73)	0.319
White cell count	8.5 (7.1–11)	8 (5)	8.3 (6.8–11)	3 (3)	0.883
Albumin	32 (27–36)	10 (6)	32 (28–36)	6 (6)	0.801
C-reactive protein	41 (9.9–90)	30 (18)	35 (12–82)	17 (17)	0.624
NLR	4.2 (3.0–6.4)	8 (5)	4.1 (2.7–7.3)	3 (3)	0.842
PLR	240 (170–350)	9 (5)	250 (170–360)	3 (3)	0.884
Aspirin use	126 (74.6)	0 (0)	72 (72)	0 (0)	0.752
Neutrophils	6.0 (4.7–8.1)	8 (5)	5.7 (4.4–7.5)	3 (3)	0.831
Lymphocytes	1.4 (1.1–1.9)	8 (5)	1.3 (1.0–1.7)	3 (3)	0.898
Platelets	340 (260–430)	9 (5)	350 (240–420)	3 (3)	0.455
Survival (days)	270 (140–450)	0 (0)	220 (130–510)	0 (0)	0.522

Values are median (IQR). P values are for association tests between variables and allocation to training/validation sets.

CCI, Charlson Comorbidity Index; EPS, EORTC Prognostic Score; LDH, lactate dehydrogenase; mGPS, modified Glasgow Prognostic Score; NLR, neutrophil-to-lymphocyte ratio; PLR, platelet-to-lymphocyte ratio; SIMD, Scottish Index of Multiple Deprivation; SOB, shortness of breath.

associated with null models. As general guidance, good models are typically associated with AUC scores/C-statistics >0.7, very good models with values >0.8 and perfect models with values=1.0 (as is the case with D_{xy}).²⁰

Model selection

A specific signature length was chosen to validate each of the generated models as described in the

online supplementary appendix. This was selected as the minimum length signature that delivered maximal performance within the training set. Models generated for dichotomised outcomes (OS <6 months and OS <12 months) produce an estimated probability of class membership (survival vs not) for each sample. This probability may subsequently be dichotomised at a specific threshold to produce a binary prediction. To do this, an

optimal threshold for each model was defined based on sensitivity and specificity read from receiver operating characteristic (ROC) curves plotted for each. These thresholds (eg, 0.3) dichotomise samples into those that are predicted to survive versus not based on probabilities of survival at this value.

Signature validation details

Using the reserved validation set (n=100), the performance of the finalised selected models was assessed. The same metrics were used as for the cross-validation tests performed on the training set. CIs for these performance metrics were generated by bootstrapping the validation set 5000 times by sample. For the 6-month and 12-month OS models, which involve a binary outcome, the continuous predictions were dichotomised for a given optimised threshold value, chosen based on ROC curves, as above. These dichotomised predictions were compared with the known survival outcomes in the validation set using 2×2 contingency tables.

RESULTS

Clinical characteristics

Clinical and survival characteristics of the study population are summarised in [table 1](#). The mean age at diagnosis was 73 years and the majority (81%) were male. The most common histological subtypes were: epithelioid (176/269 (65%)), sarcomatoid (51/269 (19%)), biphasic (20/269 (7%)) and not otherwise specified (22/269 (8%)). PS was 0–1 in 136/269 (51%), 2 in 32/269 (12%), 3 in 18/269 (7%), 4 in 7/269 (2%) and not available in 76/269 (28%). EORTC Prognostic Score was low risk (<1.27) in 137/269 (51%), high risk (>1.27) in 52/269 (19%) and not available in 80/269 (30%). The main symptoms reported at baseline were shortness of breath (48%), chest pain (13%) and combined shortness of breath and chest pain (10%). The median survival time was 270 (IQR 140–450) days.

Characteristics of the training and validation sets

There were no significant associations between selected assignments to the training or validation set and the results of any of the predictor variables (see [table 1](#)). Over 50% of cases had missing data for serum lactate dehydrogenase (LDH) (127 (75%) were missing for the training set and 73 (73%) in the validation set) and this variable was dropped from downstream analysis, based on 19/20 predictor variables.

Signature generation results

Results of cross-validation combined with permutation analyses based on the three finalised models from the training set are presented in [figure 1](#). Note that the scales vary in these plots since the AUC score used to describe the <6-month and <12-month OS models vary over a

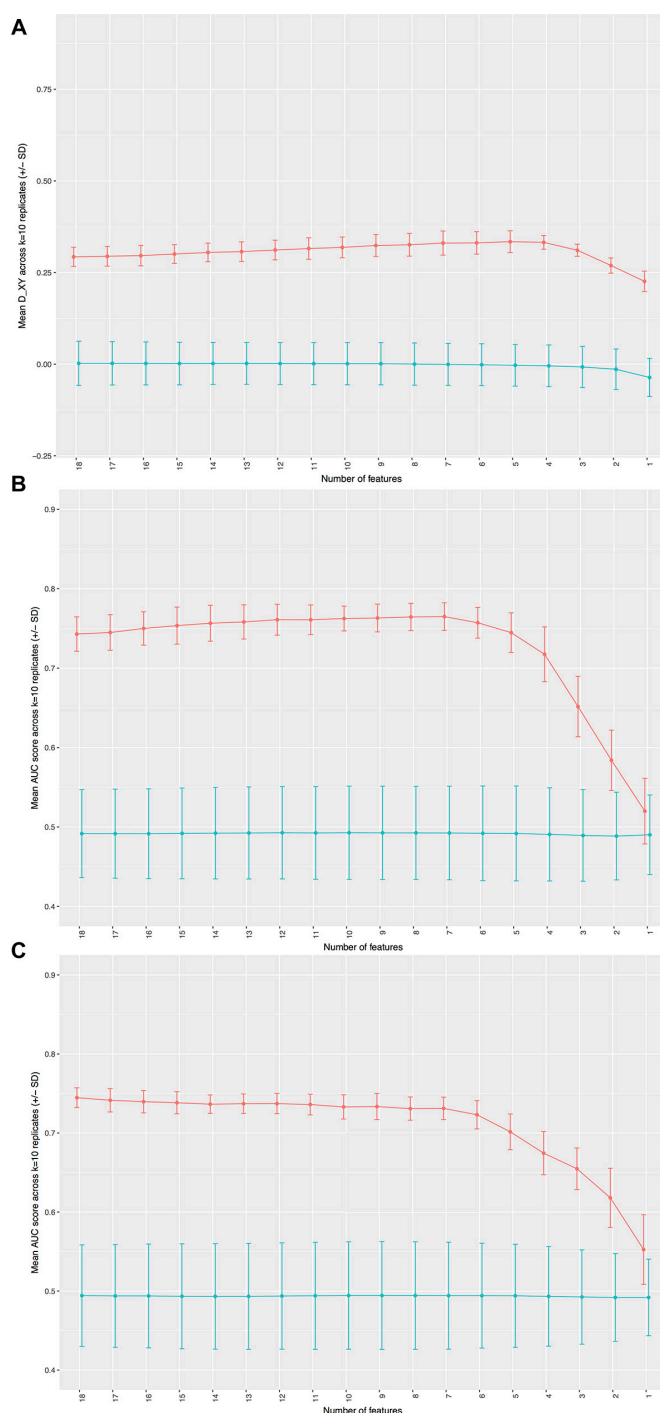


Figure 1 Model performance as a function of the number of features for actual (red line) and permuted (blue line) data. Performance for overall survival (OS) is measured by D_{XY} for OS (A) and area under the curve (AUC) for <6-month and 12-month OS (Band C, respectively). SDs from replicates of cross-validation are shown for each point as bars.

different range (0.5–1.0) than D_{XY} (0–1), which is used to describe the primary OS model.

Selection of final signature lengths

To test the performance of each model in the reserved validation set, a signature length was selected for each

Table 2 Survival models were generated using Lasso regression in 269 patients with malignant pleural mesothelioma

Predictor variables included in final model	OS	OS <6 months	OS <12 months
Age	0.086070	0.146336	0.176899
White cell count	0.245527	0.436034	0.182477
Albumin	-0.198633	-0.264057	-0.273290
Epithelioid subtype		-0.311515	-0.191842
C-reactive protein			0.110628
Platelet count		0.000774	

Cells report coefficients associated with each predictor; these are weighting factors relative to the units of the variable after scaling. Positive coefficients describe a positive association between the predictor variable and mortality risk; negative coefficients describe the opposite. The sum of the weighted coefficients produces an estimate for the outcome of interest. Lasso, least absolute shrinkage and selection operator; OS, overall survival.

model. This was based on the minimum length best performing signature. The final selected models are shown in [table 2](#). For the <6-month and <12-month OS models, optimal model thresholds also had to be chosen based on the sensitivity and specificity for a range of possible threshold values. The ROC curves for each model are presented in [figure 2](#) and the best performing binary classifiers were expected applying thresholds of 0.3 and 0.6 to the outputs of the <6-month and <12-month models, respectively (see [table 3](#)).

Overall survival (days)

The primary OS model performed significantly better than would be expected by chance based on cross-validation and permutation analyses (see [figure 1A](#): mean D_{XY} 0.332 (± 0.019)). This model assigned high weights to four predictor variables: age, PS, white cell count (WCC)

and serum albumin. The absolute value of each coefficient can be used to rank factors among each other (see [table 2](#)).

Models 2 and 3 (survival <6 and 12 months)

The <6-month and <12-month OS models also performed significantly better than would be expected by chance based on cross-validation and permutation analyses, see [figure 1B,C](#). In addition to the four high-weight predictor variables contained in the main OS model, high weights were also assigned to epithelioid histology and platelets in the <6-month model (see [figure 2A](#): mean AUC approximately 0.758 (± 0.022)) and epithelioid histology and C-reactive protein (CRP) level in the <12-month model (see [figure 2B](#): mean AUC approximately 0.737 (± 0.012)). [Table 2](#) highlights the coefficients associated with each predictor within these models.

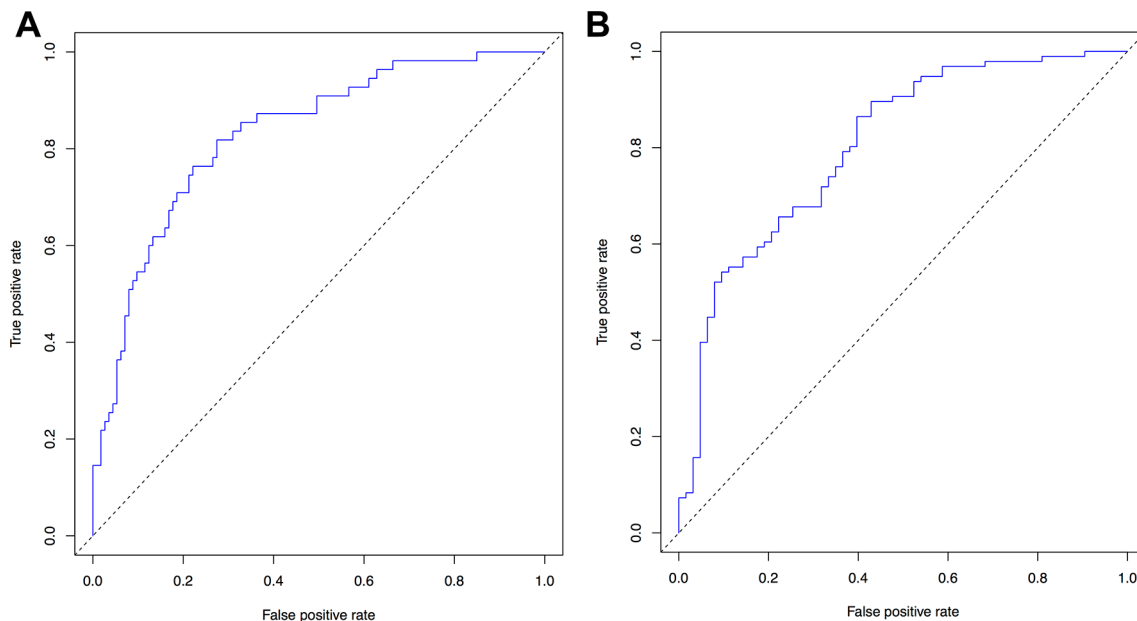


Figure 2 Receiver operating characteristic curves (true positive rates as a function of false positive rates) for (A) <6-month overall survival (mean area under the curve (AUC) 0.758 (± 0.022)) and (B) <12-month overall survival (mean AUC 0.737 (± 0.012)).

Table 3 Dichotomised survival prediction models were generated using Lasso regression in 269 patients with malignant pleural mesothelioma

Model 2 (survival <6 months)		Model 3 (survival <12 months)			
Optimal threshold: 0.3		Optimal threshold: 0.6			
	False	True			
False	40	10	False	27	22
True	19	28	True	7	38

The performance of dichotomised predictions (rows) at selected optimal threshold values relative to the observed survival outcomes (columns) is reported in contingency tables. Lasso, least absolute shrinkage and selection operator.

Model validation

Consistent with the results from cross-validation during signature generation, the main OS model performed significantly better than expected by chance, as indicated by 95% CI lower limits of D_{xy} above zero (0.221 (0.0935–0.346)). The performance of the OS model in the validation set was also consistent with that estimated from the training set, as indicated by a non-significant difference between the cross-validation mean D_{xy} (0.332) and the validation set mean D_{xy} 0.221 (0.0935–0.346).

The <6-month and <12-month models also performed well in the validation set, with 95% CI lower limits for AUC well above 0.5. In addition, the performance of each model was consistent between training and validation sets. For the <6-month model there was a non-significant difference between the cross-validation mean AUC (0.758) and the mean AUC in the validation set 0.74 (0.638–0.836). Similarly, for the <12-month model, there was a non-significant difference between the cross-validation mean AUC (0.737) and the validation set mean AUC (0.794 (0.688–0.883)).

The performance of the dichotomised predictions of the 6-month and 12-month models, relative to the observed survival outcomes, was summarised using contingency tables (see [table 3](#)). These demonstrated that the <6-month model had 74% sensitivity and 68% specificity for predicting death within 6 months of diagnosis. The accuracy of this model was 70%. The <12-month model had 63% sensitivity and 79% specificity for predicting death within 12 months, with an accuracy of 69%.

DISCUSSION

In this study, we have derived a set of robust computational models for survival prediction in MPM. To our knowledge, this is the first MPM study to use Lasso regression analysis, as recommended in the TRIPOD statement.¹⁰ In a test set of 169 cases, we defined a prognostic OS signature based on WCC, serum albumin, PS and age, and successfully validated this in a reserved set of 100 cases. We dichotomised the outcomes of this model to create <6-month and <12-month OS models.

These incorporated the four original predictors and also assigned high predictor weights to epithelioid histology (both models), platelet count (<6-month model) and CRP level (<12-month model).

At validation, each model performed better than would be expected by chance, as indicated by 95% CI lower limits of D_{xy} above zero (for model 1) and AUC values above 0.5 (for models 2 and 3). However, the overall predictive value of each model was relatively poor. This is best reflected by the quantitative D_{xy} score, which was only 0.221 (0.0935–0.346) in the validation set, suggesting that the concordance between the observed and predicted survival outcomes was only 22% better than would be expected by chance. Similarly, for the <6-month and <12-month OS models, the observed sensitivities and specificities for each (<6 months: 74% sensitivity and 68% specificity, <12 months: 63% sensitivity and 79% specificity) are insufficient to be of reliable clinical value given the potential impact of adverse survival predictions. These might include advising a patient against an attempt at palliative chemotherapy or involvement in a clinical trial, and would frequently result in considerable emotional distress. Future Lasso regression models, incorporating much denser MPM phenotyping (eg, genomic data and volumetric tumour imaging), should seek to exceed these metrics to deliver clinically useful prognostic tools. Ideally these would deliver highly individualised survival predictions, such as those recently reported in breast cancer and melanoma.²¹

Model composition and comparison with previous studies

Our primary OS signature assigned high weights to four predictor variables: WCC, serum albumin, PS and age. The Lasso method penalises inclusion of large numbers of predictor inputs and signatures are minimised as part of the process. Within our analyses, retention of additional variables beyond these four proved to be of no discriminative advantage (see [figure 1A](#)). These four key predictors were retained in the dichotomised outcome models regarding 6-month and 12-month survival, but these benefited from additional retention of histological subtype (epithelioid reducing the probability of death) and a measure of systemic inflammation, which increased the probability of death (as platelets in model 2 (survival <6 months) and CRP level in model 3 (survival <12 months), see [table 2](#)). The content of these signatures is generally concordant with previous MPM studies, which have consistently demonstrated the prognostic impact of age,²² PS,⁸ albumin,²³ WCC,²⁰ epithelioid subtype,^{24–27} CRP^{28–30} and platelets.³¹ Our models also closely resemble the two best validated MPM prognostic scores, the CALGB score⁷ and the EORTC score.⁸ The concordance of our results, which are based on unselected registry data analysed using Lasso regression, with these studies, which involved highly selected clinical trial populations and were analysed using different statistical methods, emphasises the apparently universal prognostic

importance of WCC, serum albumin, PS, age and histological subtype.^{7 8 32}

Our models also closely resemble the Brims model, in which the key prognostic variables were PS, serum albumin and histological subtype, weight loss and haemoglobin (Hb) concentration.⁹ We did not select Hb as a potential candidate predictor for the current study because the prognostic impact of Hb levels had been contradictory in MPM studies which have reported negative,³³ positive³⁴ and no prognostic association with thrombocytosis.³⁵ In the current study, integrated measures of systemic inflammation, such as NLR, PLR and mGPS, appeared less prognostically important than some previous studies have suggested.^{13 14} Meta-analyses in lung and other cancers have also previously suggested that socioeconomic factors are associated with less access to treatment,³⁴ increased comorbidity and poorer outcomes.^{36 37} Similar studies in MPM have been inconclusive^{38 39} and we failed to identify deprivation as a major prognostic factor in this study. We included aspirin use as a potential candidate predictor given the potential link between cyclo-oxygenase biology⁴⁰ and MPM survival and the HMGB1 pathway.¹⁶ However, we found no evidence of a clinically important prognostic effect. Serum and pleural fluid biomarkers (eg, mesothelin) are not routinely used in MPM as they offer no reliable prognostic information⁴¹ and were not considered here.

Subsequent chemotherapy administration was not included as a candidate predictor since this was not a baseline factor. Of note, only 67/269 patients (24.9%) received chemotherapy over subsequent follow-up, contrasting significantly with previous prognostic model studies (61.4%–100% of patients received chemotherapy in the Brims,⁹ EORTC⁷ and CALGB studies⁸). In a previous Dutch registry series, increased age was associated with decreased chemotherapy use.⁴² The mean age in our cohort (73 years) was higher than in the Dutch series (68 years) and age may have been a factor in the chemotherapy rate reported. However, median age in recent English national audit data (75 years) was similar to ours and chemotherapy use was higher (36.5%).⁴³ It therefore appears highly likely that other factors are involved.

Model performance and comparison with previous studies

In the recent study reported by Brims *et al.*,⁹ which used decision tree analysis, the C-statistic was used to assess model performance (validation C-statistic: 0.68 (95% CI 0.60 to 0.75)). This value is numerically equivalent to the AUC score²⁰ used here to describe the performance of the dichotomised models for <6-month and <12-month survival (validation AUC 0.74 (0.638–0.836) and 0.794 (0.688–0.883), respectively), and similar to the censoring-adjusted C-statistic used here to assess our primary OS signature (validation C-statistic 0.6106 (0.5468–0.673)). These performance metrics are broadly similar and are consistently below the AUC/C-statistic threshold (>0.8)

generally required of a strong survival model.²⁰ The performance of the EORTC and CALGB scores cannot be directly compared with the currently reported models because the primary metrics used to describe these were HRs, reporting the relative risk of death between different risk groups.

Based on these comparable performance metrics, the Lasso regression models reported here therefore appear to offer similar prognostic performance to previous models and are based on many of the same predictors. The uniquely quantitative value of D_{xy} demonstrates that the routinely available clinical data used to define these models are fundamentally unable to describe the bulk of the variability in survival outcomes seen in real patients. This is reflected in a validation D_{xy} value for our primary OS signature of only 0.221, which equates to only a 22% improvement in concordance between the observed and predicted survival outcomes than would be expected by chance.

Methodological considerations and clinical applicability

Both the decision tree analysis and the multivariate logistic regression are prone to model overfitting.⁴⁴ This may lead to poor model performance in external, new patient groups and limits the clinical utility of predictive modelling approaches in general. Lasso regression, combined with an appropriate cross-validation methodology, alleviates some of the problems of model overfitting⁴⁵ and can be more readily upscaled to deal with more deeply phenotyped descriptor data. This makes this technique uniquely suited to future prediction modelling in MPM incorporating these additional predictors. However, Lasso regression is associated with complex outputs and requires important data processing steps to analyse new data within the finalised model. We sought to overcome this by creating dichotomised outcome models predicting the probability of survival at 6 and 12 months, but a relatively simple electronic or web-based program would still be required to translate input predictor values into results interpretable to clinicians. However, this need not be developed until a model with sufficient precision and accuracy has been defined.

Study limitations

This study involved retrospective data collection for some of the variables, although many were prospectively collected as outputs from a regional mesothelioma MDT. Nevertheless, this design introduces potential recall and omission bias. The latter might be important since the cases were identified from a pathology archive department; therefore frail patients in whom a histological diagnosis was not pursued will not have been included. In addition, the validation performed used an internal cohort and further external validation is required to confirm the generalisability of the models created. Our analysis is also limited by a significant number of cases with missing data for some variables. The influence of

these missing data was minimised by imputation and exclusion of variables with too many missing variables (eg, fluid LDH).

Conclusions and future studies

Prognostic models are being increasingly used in medicine for investigating patient outcome in relation to patient and disease characteristics. Such models should have a sound statistical and clinical validity, rely on a limited number of objective parameters and be generalisable to a heterogeneous group of patients.⁴⁵ Most studies describing the natural history and prognostic factors for MPM antedate accurate pathological diagnosis, optimal staging²² and a range of emerging predictors, including genomic data. This study suggests that routinely available clinical data alone are insufficient to accurately predict prognosis in MPM. The computational models defined here are suitable for expansion and upscaling using genomic data and other predictors, for example, including volumetric imaging results.

Contributors KGB conceived the study. All authors made substantial contributions to the design of the work, and the acquisition, analysis or interpretation of data. KGB, ACK, DLH and MB drafted the work. All other authors revised the work critically for important intellectual content. All authors approved the final version published and agree to be accountable for all aspects of the work, including ensuring that questions related to the accuracy or integrity of any part of the work are appropriately investigated and resolved.

Funding KGB is partly funded by a National Health Service Research Scotland Senior Fellowship and acknowledges recent relevant grant funding from the Chief Scientist's Office (ETM/285) and the British Lung Foundation (MPG16-7).

Competing interests DLH and MB are employees of Fios Genomics, a contract research organisation contracted to provide bioinformatics services to support this work.

Ethics approval This project was reviewed and approved by the Ethics Manager and Caldicott Guardian of NHS Greater Glasgow and Clyde.

Provenance and peer review Not commissioned; externally peer reviewed.

Data sharing statement Applications for use of the study data for subsequent studies will be considered, subject to appropriate regulatory and ethics approval.

Open Access This is an Open Access article distributed in accordance with the Creative Commons Attribution Non Commercial (CC BY-NC 4.0) license, which permits others to distribute, remix, adapt, build upon this work non-commercially, and license their derivative works on different terms, provided the original work is properly cited and the use is non-commercial. See: <http://creativecommons.org/licenses/by-nc/4.0/>

© Article author(s) (or their employer(s) unless otherwise stated in the text of the article) 2018. All rights reserved. No commercial use is permitted unless otherwise expressly granted.

REFERENCES

1. Vogelzang NJ, Rusthoven JJ, Symanowski J, *et al*. Phase III study of pemetrexed in combination with cisplatin versus cisplatin alone in patients with malignant pleural mesothelioma. *J Clin Oncol* 2003;21:2636–44.
2. Zalcman G, Mazieres J, Margery J, *et al*. Bevacizumab for newly diagnosed pleural mesothelioma in the Mesothelioma Avastin Cisplatin Pemetrexed Study (MAPS): a randomised, controlled, open-label, phase 3 trial. *Lancet* 2016;387:1405–14.
3. Pass H, Giroux D, Kennedy C, *et al*. The IASLC mesothelioma staging project: improving staging of a rare disease through international participation. *J Thorac Oncol* 2016;11:2082–8.
4. Gill RR, Naidich DP, Mitchell A, *et al*. North American multicenter volumetric CT study for clinical staging of malignant pleural mesothelioma: feasibility and logistics of setting up a quantitative imaging study. *J Thorac Oncol* 2016;11:1335–44.

5. Frauenfelder T, Tutic M, Weder W, *et al*. Volumetry: an alternative to assess therapy response for malignant pleural mesothelioma? *Eur Respir J* 2011;38:162–8.
6. Bueno R, Stawiski EW, Goldstein LD, *et al*. Comprehensive genomic analysis of malignant pleural mesothelioma identifies recurrent mutations, gene fusions and splicing alterations. *Nat Genet* 2016;48:407–16.
7. Herndon JE, Green MR, Chahinian AP, *et al*. Factors predictive of survival among 337 patients with mesothelioma treated between 1984 and 1994 by the Cancer and Leukemia Group B. *Chest* 1998;113:723–31.
8. Curran D, Sahnoud T, Therasse P, *et al*. Prognostic factors in patients with pleural mesothelioma: the European organization for research and treatment of cancer experience. *J Clin Oncol* 1998;16:145–52.
9. Brims FJ, Meniawy TM, Duffus I, *et al*. A novel clinical prediction model for prognosis in malignant pleural mesothelioma using decision tree analysis. *J Thorac Oncol* 2016;11:573–82.
10. Collins GS, Reitsma JB, Altman DG, *et al*. Transparent reporting of a multivariable prediction model for individual prognosis or diagnosis (TRIPOD): the TRIPOD statement. *BMJ* 2014;350:g7594.
11. Scottish Government. Scottish Index of Multiple Deprivation (SIMD). <http://www.gov.scot/Topics/Statistics/SIMD> (accessed 19 Apr 2017).
12. Charlson ME, Pompei P, Ales KL, *et al*. A new method of classifying prognostic comorbidity in longitudinal studies: development and validation. *J Chronic Dis* 1987;40:373–83.
13. Kao SC, Pavlakis N, Harvie R, *et al*. High blood neutrophil-to-lymphocyte ratio is an indicator of poor prognosis in malignant mesothelioma patients undergoing systemic therapy. *Clin Cancer Res* 2010;16:5805–13.
14. Proctor MJ, Morrison DS, Talwar D, *et al*. An inflammation-based prognostic score (mGPS) predicts cancer survival independent of tumour site: a Glasgow Inflammation Outcome Study. *Br J Cancer* 2011;104:726–34.
15. Rothwell PM, Wilson M, Price JF, *et al*. Effect of daily aspirin on risk of cancer metastasis: a study of incident cancers during randomised controlled trials. *Lancet* 2012;379:1591–601.
16. Yang H, Pellegrini L, Napolitano A, *et al*. Aspirin delays mesothelioma growth by inhibiting HMGB1-mediated tumor progression. *Cell Death Dis* 2015;6:e1786.
17. Friedman J, Hastie T, Tibshirani R. Regularization paths for generalized linear models via coordinate descent. *J Stat Softw* 2010;33:1–22.
18. Simon N, Friedman J, Hastie T, *et al*. Regularization paths for cox's proportional hazards model via coordinate descent. *J Stat Softw* 2011;39:1–13.
19. Uno H, Cai T, Pencina MJ, *et al*. On the C-statistics for evaluating overall adequacy of risk prediction procedures with censored survival data. *Stat Med* 2011;30:1105–17.
20. Hosmer DW, Lemeshow S. *Applied logistic regression*. 2nd Ed. New York, NY: Wiley, 2000.
21. Kashani-Sabet M, Sagebiel RW, Joensuu H, *et al*. A patient-centered methodology that improves the accuracy of prognostic predictions in cancer. *PLoS One* 2013;8:e56435.
22. Musk AW, Olsen N, Alfonso H, *et al*. Predicting survival in malignant mesothelioma. *Eur Respir J* 2011;38:1420–4.
23. Yao Z-H, Tian G-Y, Yang S-X, *et al*. Serum albumin as a significant prognostic factor in patients with malignant pleural mesothelioma. *Tumor Biology* 2014;35:6839–45.
24. Nojiri S, Gamba K, Aoe K, *et al*. Survival and prognostic factors in malignant pleural mesothelioma: a retrospective study of 314 patients in the west part of Japan. *Jpn J Clin Oncol* 2011;41:32–9.
25. Montanaro F, Rosato R, Gangemi M, *et al*. Survival of pleural malignant mesothelioma in Italy: a population-based study. *Int J Cancer* 2009;124:201–7.
26. Neumann V, Rütten A, Scharmach M, *et al*. Factors influencing long-term survival in mesothelioma patients—results of the German mesothelioma register. *Int Arch Occup Environ Health* 2004;77:191–9.
27. Marinaccio A, Nesti M. Regional Operational Centers. Analysis of survival of mesothelioma cases in the Italian register (ReNaM). *Eur J Cancer* 2003;39:1290–5.
28. Baud M, Strano S, Dechartres A, *et al*. Outcome and prognostic factors of pleural mesothelioma after surgical diagnosis and/or pleurodesis. *J Thorac Cardiovasc Surg* 2013;145:1305–11.
29. Kao SC, Vardy J, Harvie R, *et al*. Health-related quality of life and inflammatory markers in malignant pleural mesothelioma. *Supportive Care in Cancer* 2013;21:697–705.
30. Ghanim B, Hoda MA, Winter MP, *et al*. Pretreatment serum C-reactive protein levels predict benefit from multimodality treatment including radical surgery in malignant pleural

- mesothelioma: a retrospective multicenter analysis. *Ann Surg* 2012;256:357–62.
31. Cihan YB, Ozturk A, Mutlu H. Relationship between prognosis and neutrophil: lymphocyte and platelet:lymphocyte ratios in patients with malignant pleural mesotheliomas. *Asian Pac J Cancer Prev* 2014;15:2061–7.
 32. Edwards JG, Abrams KR, Leverment JN, *et al*. Prognostic factors for malignant mesothelioma in 142 patients: validation of CALGB and EORTC prognostic scoring systems. *Thorax* 2000;55:731–5.
 33. Ruffie P, Feld R, Minkin S, *et al*. Diffuse malignant mesothelioma of the pleura in Ontario and Quebec: a retrospective study of 332 patients. *Journal of Clinical Oncology* 1989;7:1157–68.
 34. Forrest LF, Adams J, Wareham H, *et al*. Socioeconomic inequalities in lung cancer treatment: systematic review and meta-analysis. *PLoS Med* 2013;10:e1001376.
 35. Spirtas R, Connelly RR, Tucker MA. Survival patterns for malignant mesothelioma: the seer experience. *Int J Cancer* 1988;41:525–30.
 36. Lee L, Cheung WY, Atkinson E, *et al*. Impact of comorbidity on chemotherapy use and outcomes in solid tumors: a systematic review. *J Clin Oncol* 2011;29:106–17.
 37. Dalstra JAA, Kunst AE, Borrell C, *et al*. Socioeconomic differences in the prevalence of common chronic diseases: an overview of eight European countries. *Int J Epidemiol* 2005;34:316–26.
 38. Kao SC-H, Clarke S, Vardy J, *et al*. Patterns of care for malignant pleural mesothelioma patients compensated by the Dust Diseases Board in New South Wales, Australia. *Intern Med J* 2013;43:402–10.
 39. Linton A, Soeberg M, Broome R, *et al*. Geographic and socioeconomic factors in patients with malignant pleural mesothelioma in New South Wales and their impact upon clinical outcomes. *Respirology* 2017;22:978–85.
 40. O'Kane SL, Cawkwell L, Campbell A, *et al*. Cyclooxygenase-2 expression predicts survival in malignant pleural mesothelioma. *Eur J Cancer* 2005;41:1645–8.
 41. Arnold DT, De Fonseca D, Hamilton FW, *et al*. Prognostication and monitoring of mesothelioma using biomarkers: a systematic review. *Br J Cancer* 2017;116:731–41.
 42. Damhuis RAM, Schroten C, Burgers JA. Population-based survival for malignant mesothelioma after introduction of novel chemotherapy. *Eur Respir J* 2012;40:185–9.
 43. Royal College of Physicians. National lung cancer audit pleural mesothelioma report 2016 (for the audit period 2014). 2016:1–38.
 44. Justice AC, Covinsky KE, Berlin JA. Assessing the generalizability of prognostic information. *Ann Intern Med* 1999;130:515–24.
 45. Tibshirani R. Regression shrinkage and selection via the Lasso. *J Royal Stat Soc Series b* 1996;58:267–88.

Survival prediction in mesothelioma using a scalable Lasso regression model: instructions for use and initial performance using clinical predictors

Andrew C Kidd, Michael McGettrick, Selina Tsim, Daniel L Halligan, Max Bylesjo and Kevin G Blyth

BMJ Open Resp Res 2018 5:
doi: 10.1136/bmjresp-2017-000240

Updated information and services can be found at:
<http://bmjopenrespres.bmj.com/content/5/1/e000240>

These include:

References

This article cites 42 articles, 10 of which you can access for free at:
<http://bmjopenrespres.bmj.com/content/5/1/e000240#ref-list-1>

Open Access

This is an Open Access article distributed in accordance with the Creative Commons Attribution Non Commercial (CC BY-NC 4.0) license, which permits others to distribute, remix, adapt, build upon this work non-commercially, and license their derivative works on different terms, provided the original work is properly cited and the use is non-commercial. See: <http://creativecommons.org/licenses/by-nc/4.0/>

Email alerting service

Receive free email alerts when new articles cite this article. Sign up in the box at the top right corner of the online article.

Notes

To request permissions go to:
<http://group.bmj.com/group/rights-licensing/permissions>

To order reprints go to:
<http://journals.bmj.com/cgi/reprintform>

To subscribe to BMJ go to:
<http://group.bmj.com/subscribe/>