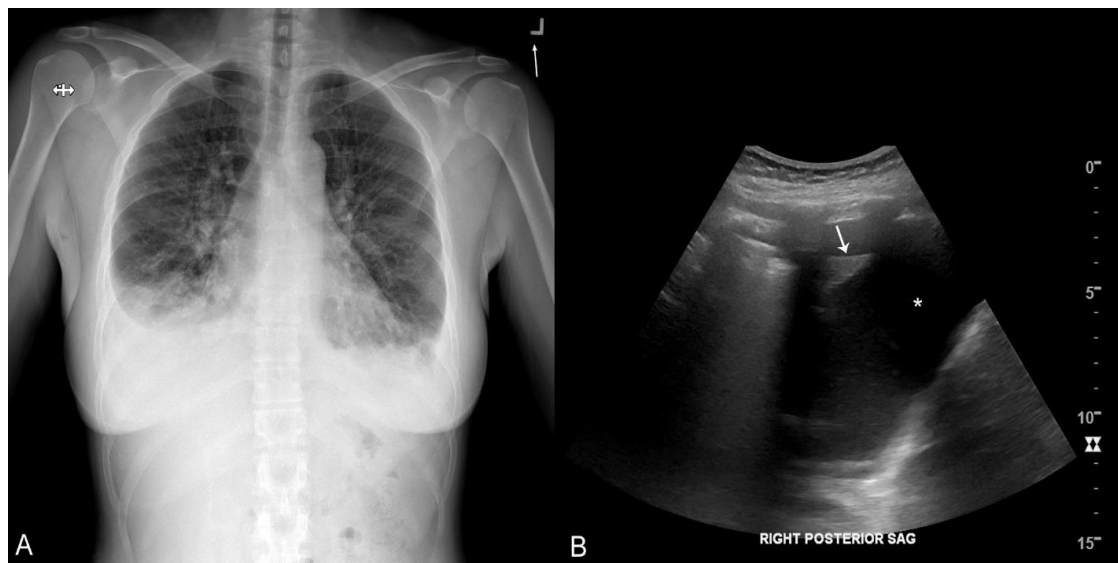
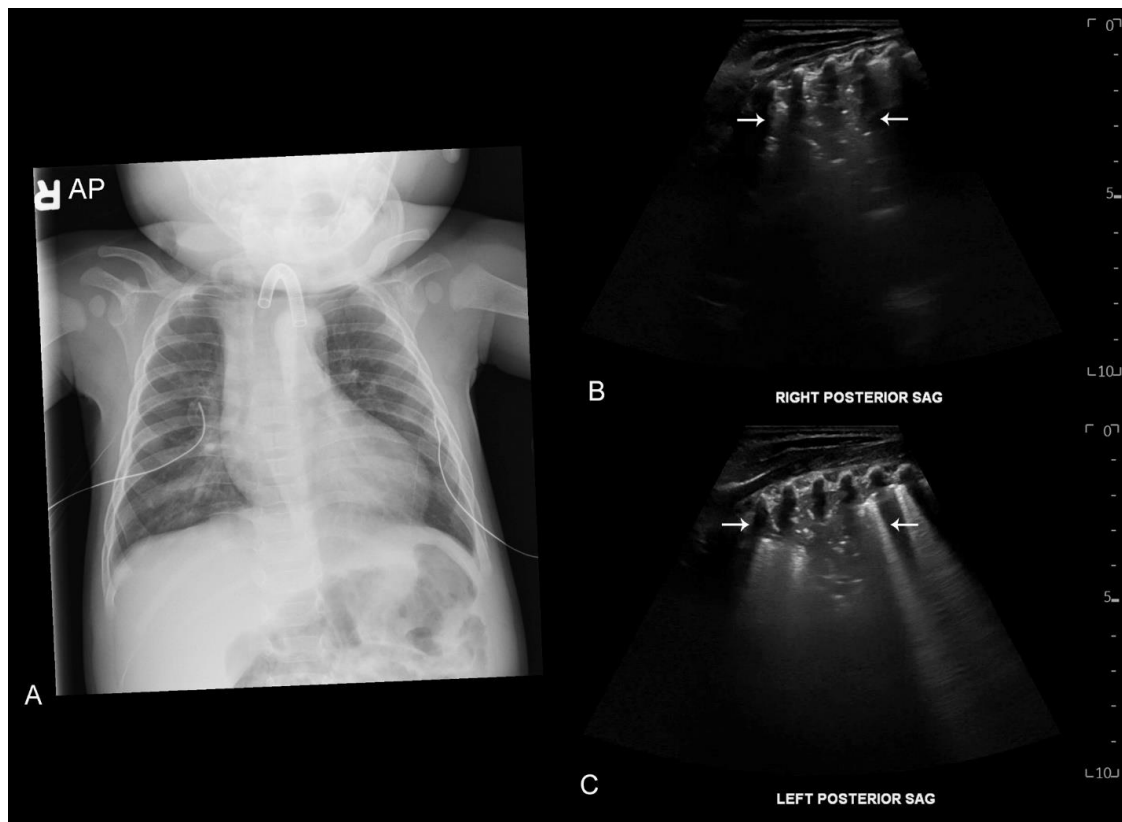


**Online Supplemental Figures:**

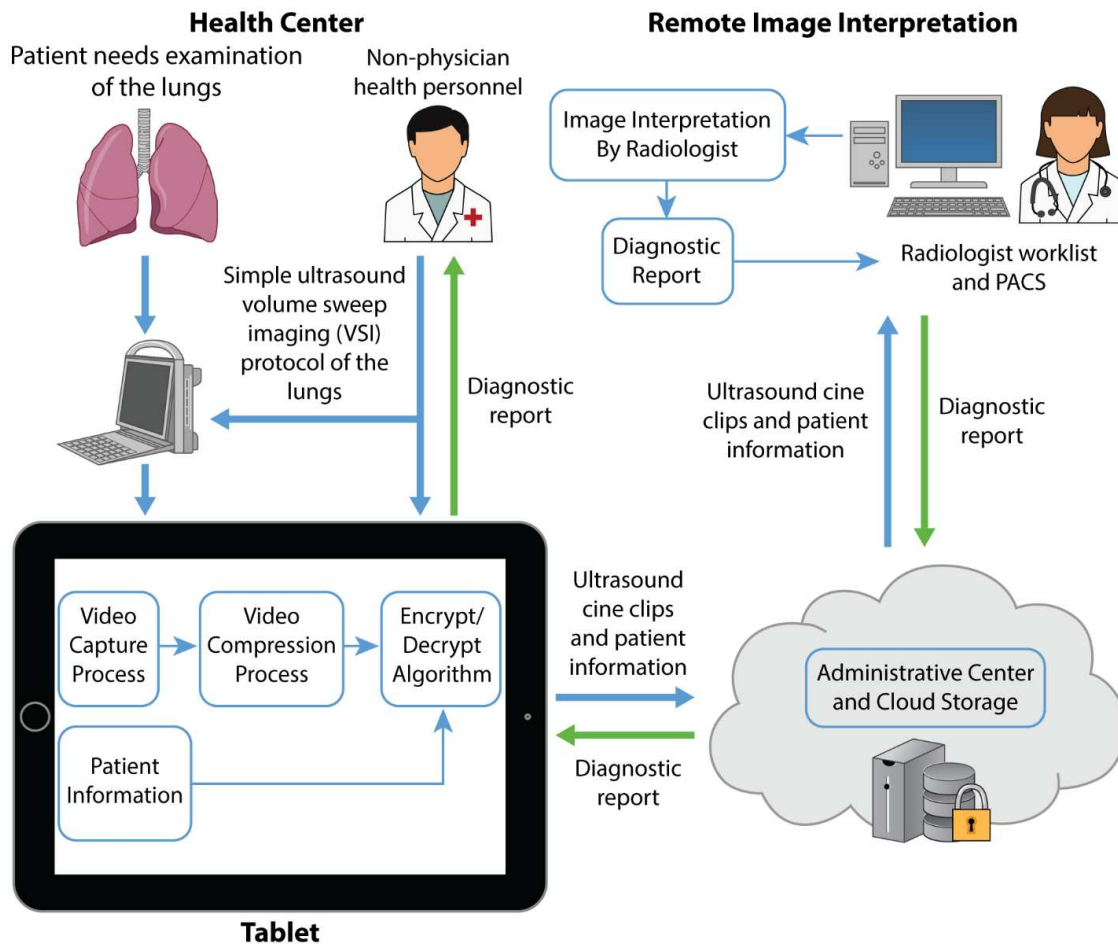
Supplemental figure 1. Pleural Effusion on VSI. (A) Chest x-ray of a 40-year-old immunosuppressed female with a clinical diagnosis of multifocal pneumonia. (B) Single frame ultrasound image from the VSI examination showing a moderate right pleural effusion (\*) with associated consolidation of the lung (arrow). VSI cine clips have been submitted as Video 3.



Supplemental figure 2. Vaping Lung Injury on VSI. Chest x-ray (A) and coronal CT (B) of vaping-induced lung injury in a 17-year-old female. Radiographic findings include diffuse bilateral ground glass opacity and consolidation. Single frame ultrasound images from the VSI examination of transverse (C) and sagittal (D) sweeps showing diffuse B-line artifact. VSI cine clips have been submitted as Video 4.



Supplemental figure 3. Bronchiolitis on VSI. (A) Chest x-ray of a 6-month-old male with RSV confirmed bronchiolitis. Single frame ultrasound images from the VSI examination of the right posterior sagittal (B) and left posterior sagittal (C) sweeps showing non-specific consolidative opacity (arrows) which may represent atelectasis or pneumonia. VSI cine clips have been submitted as Video 5.



Supplemental figure 4. Lung Teleultrasound with VSI. Schematic showing integration of lung VSI into clinical practice. The system is already in use in Peru by Medical Innovation and Technology.